



University Education in the Age of Digital Great Transformation

Teruo Fujii, PhD

President, The University of Tokyo

Economic and materialistic development alone is not enough to increase human prosperity and well-being.



Climate change



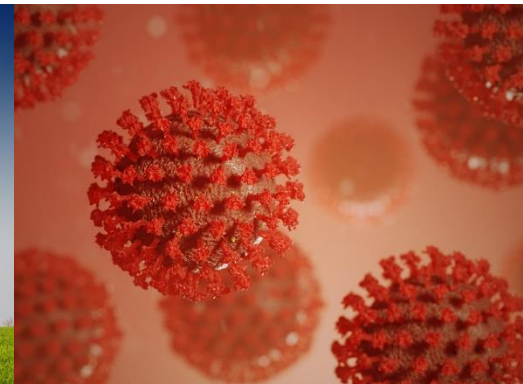
Food crises



Plastic waste



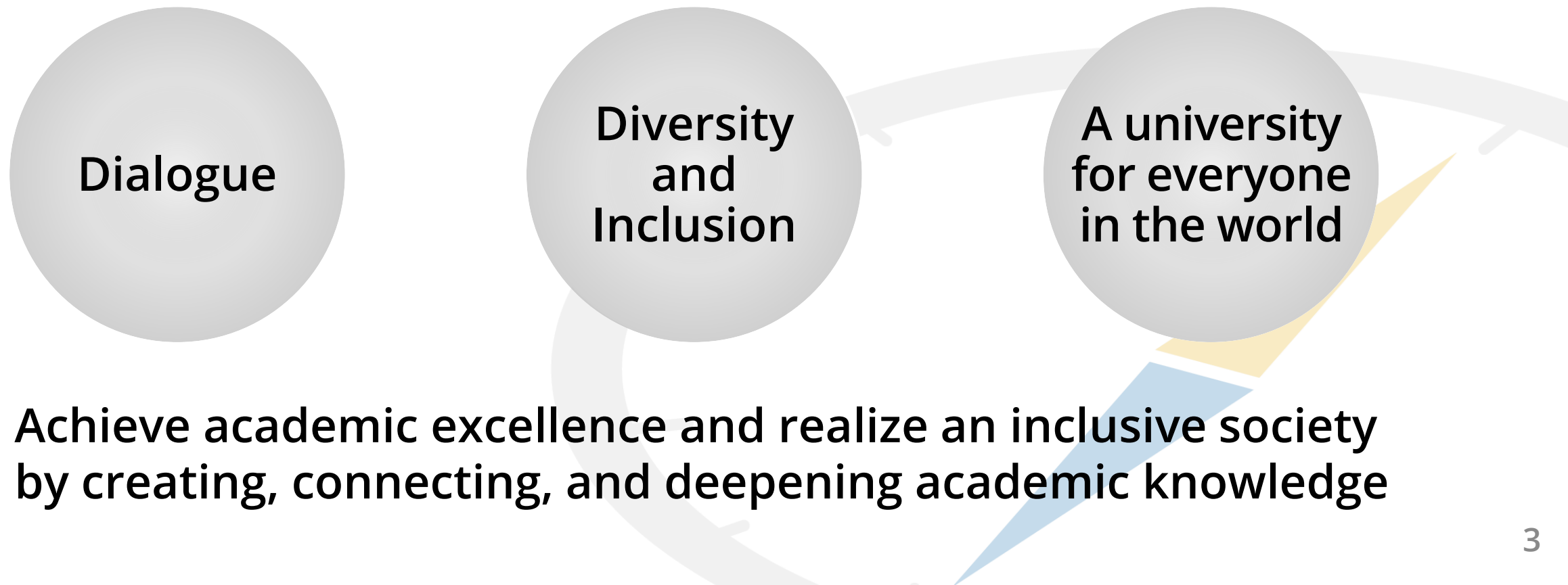
Energy problems



COVID-19

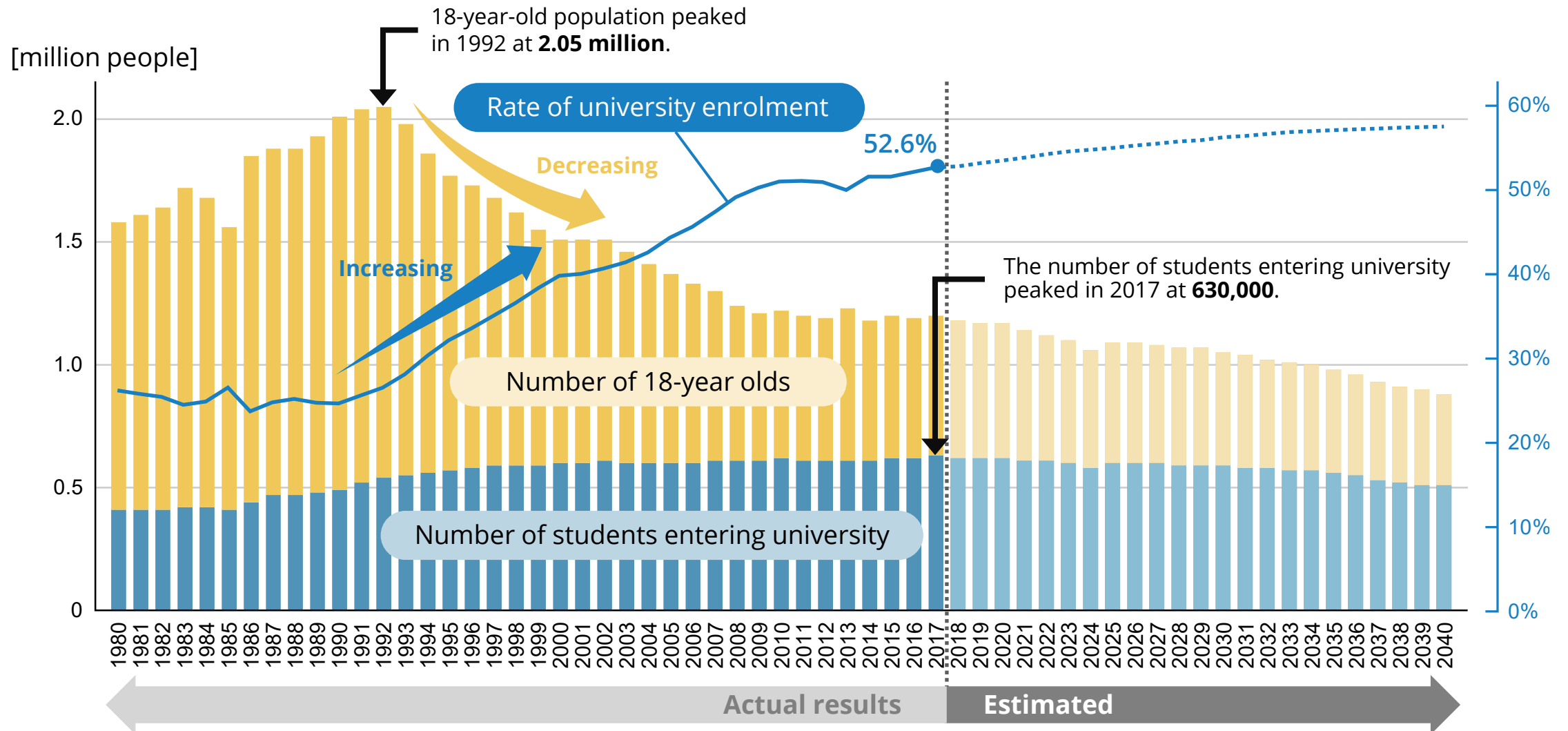
UTokyo COMPASS

*Into a **Sea** of Diversity:* Creating the Future through Dialogue

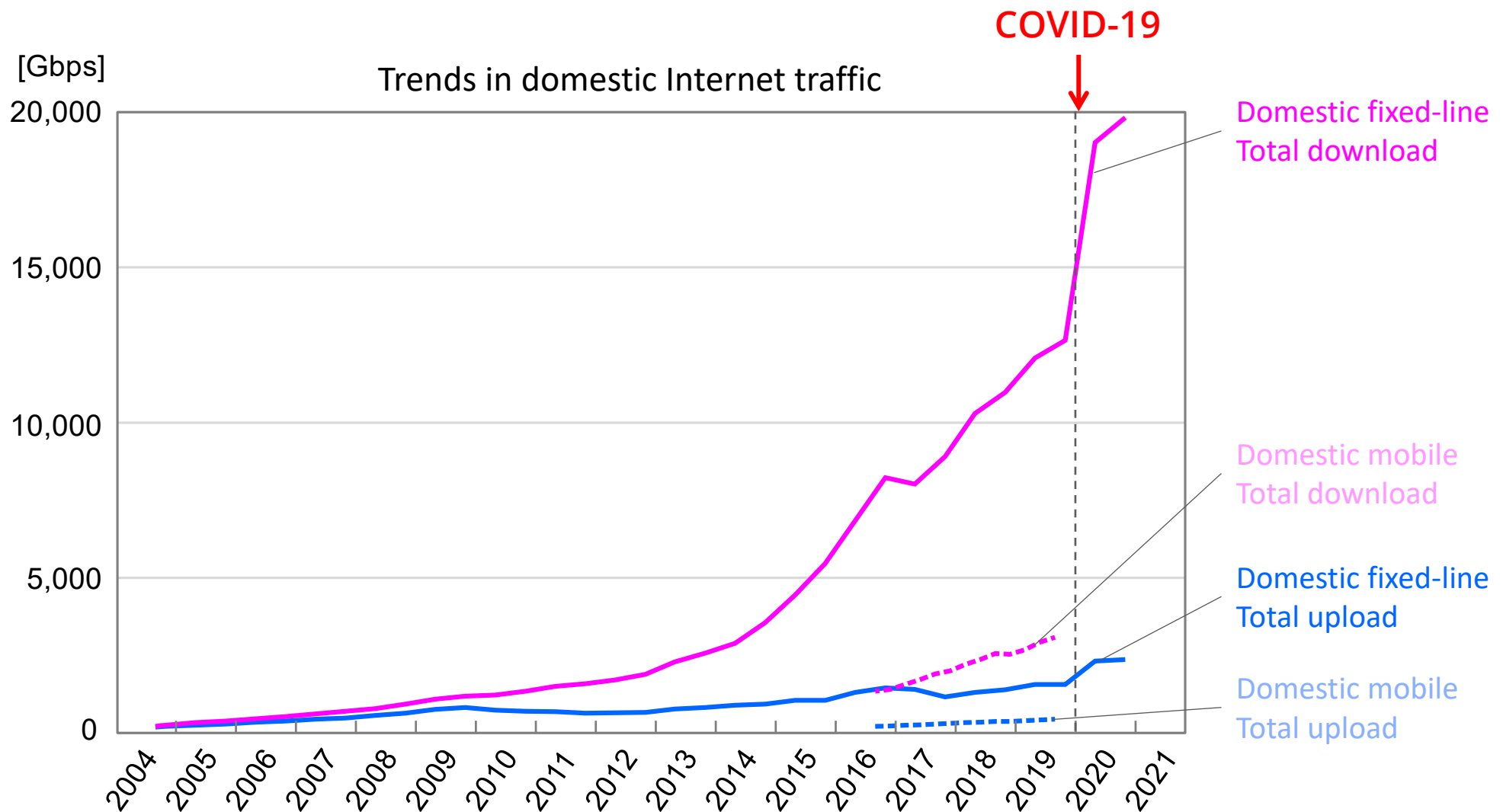


Trends of the number of students entering university in Japan

Cited from the materials of the first-round proposal by the Council for the Creation of Future Education, 10 May 2022

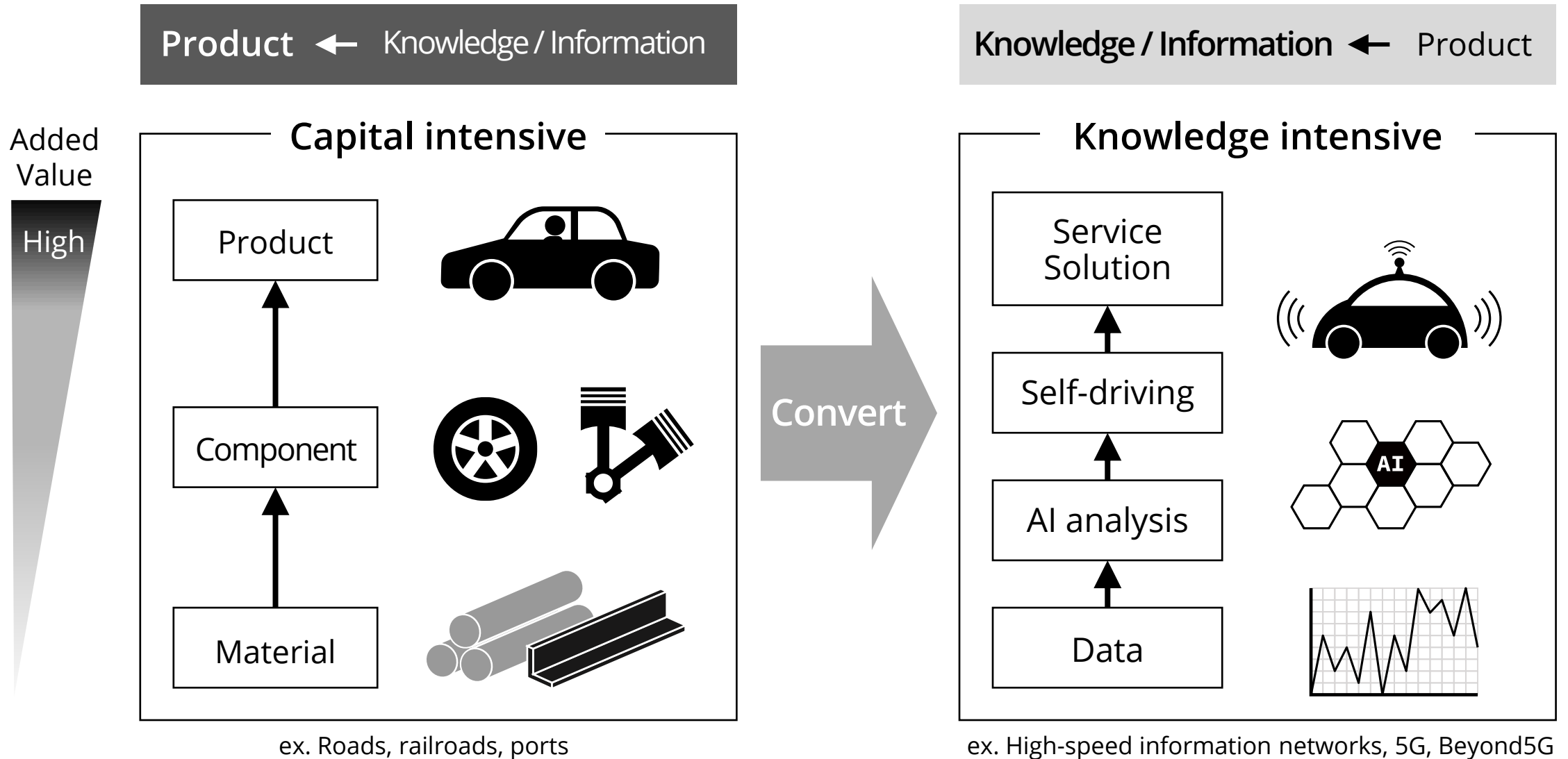


Rapid increase in data traffic



Based on data from the Ministry of Internal Affairs and Communications; figures are estimates.

Paradigm shift to a data-driven society



Toward a data-driven society - Upgrading human capital



STEAM education × Education DX

From "If you don't learn, you don't learn" to "Learn how to learn."

Expand opportunities for Lifelong Learning and contribute to the advancement of human capital.

Need to consider mechanisms (taxation, etc.) that will lead to "behavioral change" in society as a whole.

Approaches to Reskilling that contribute to the development of DX human resources

Data Science School by UTokyo Extension Co., Ltd., a subsidiary company



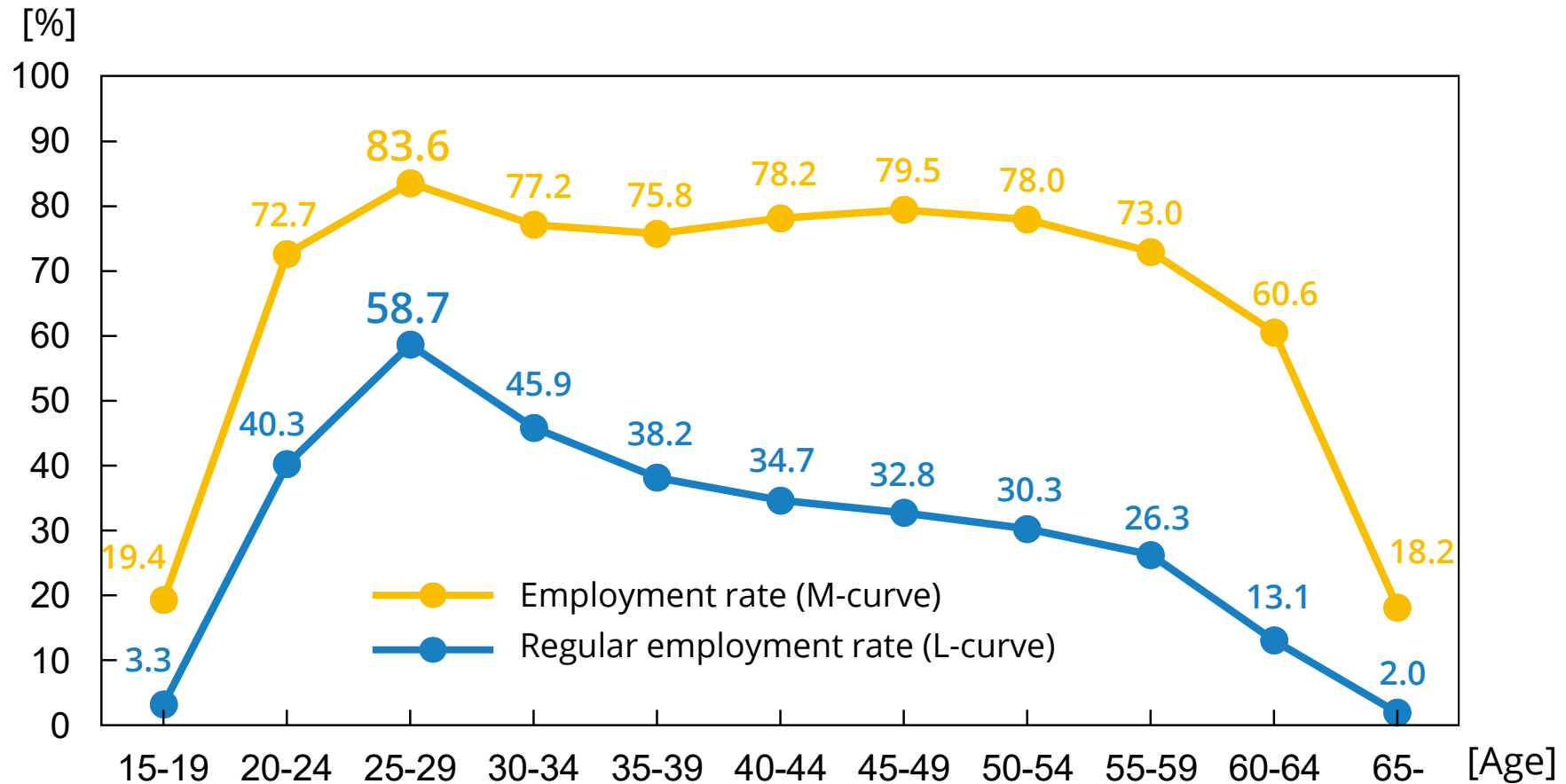
Professors from the UTokyo provide a thorough explanation of systematic data science theories developed at UTokyo from the very basics.

- Established for the purpose of recurrent education at UTokyo
- A central hub for disseminating UTokyo's various educational contents to society
- Classroom for 80 students will be available in Otemachi Building and lectures started in 2019.
- The number of students is rapidly increasing: 241 in the first year, 480 in FY2020, and 1,471 in FY2021.



Percentage of women in regular employment by age group in Japan

Cited from **White Paper on Gender Equality**, 2022 edition.



Note: Based on Ministry of Internal Affairs and Communications, Labour Force Survey
Employment rate = Number of people employed / Population aged 15 and over
Regular employment rate = Number of regular staff & employees / Population aged 15 and over



Diversity & Inclusion



Promote diversity and inclusion

New organization for promoting diversity research & education
Declaration of diversity and inclusion



Diversity and inclusion education

A wide range of learning in areas including diversity and inclusion, global commons, data science, and digital applications



Build an inclusive campus

An inclusive campus that anyone in the world would want to be part of



Board Members

as of April 1, 2021



80 years of building new worlds
through knowledge

WOMEN in SCIENCE

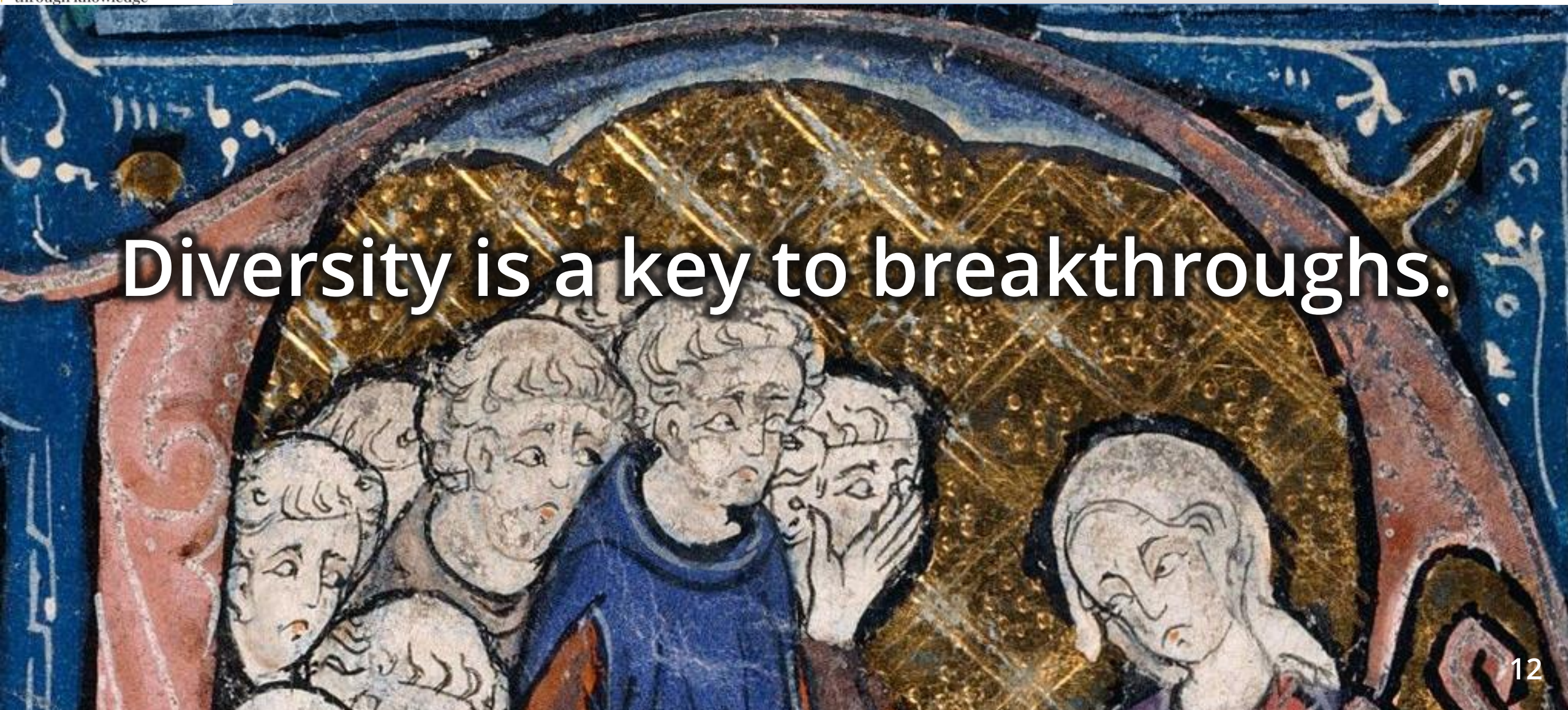
11 October 2019 16:00-18:00

GRIPS 7-22-1 Roppongi, Minato-ku, Tokyo



東京大学
THE UNIVERSITY OF TOKYO

Diversity is a key to breakthroughs.





東京大学
生産技術研究所
Institute of Industrial Science,
The University of Tokyo

価値創造デザインフォーラム 2016

Design-Led X

デザインが先導する未来



Royal College of Art
Postgraduate Art & Design



Agreement with
Royal College of Art, UK
Dec. 2016

INNOVATION DESIGN ENGINEERING, Royal College of Art



“You don't get harmony when everybody sings the same note” – Doug Floyd

Expanding Entrepreneurship Education



Entrepreneurship Dojo Program

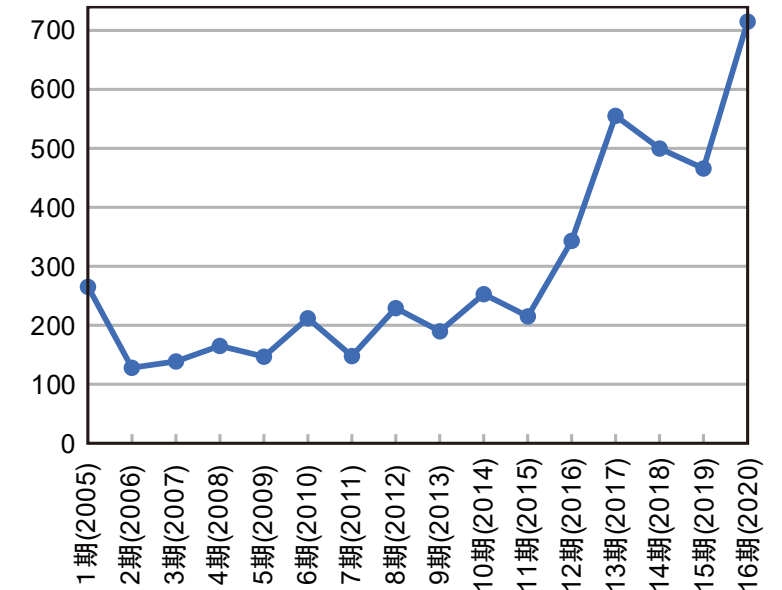
Since 2005, more than **4,000 people** have attended the course and more than **100 students** have started their own businesses.



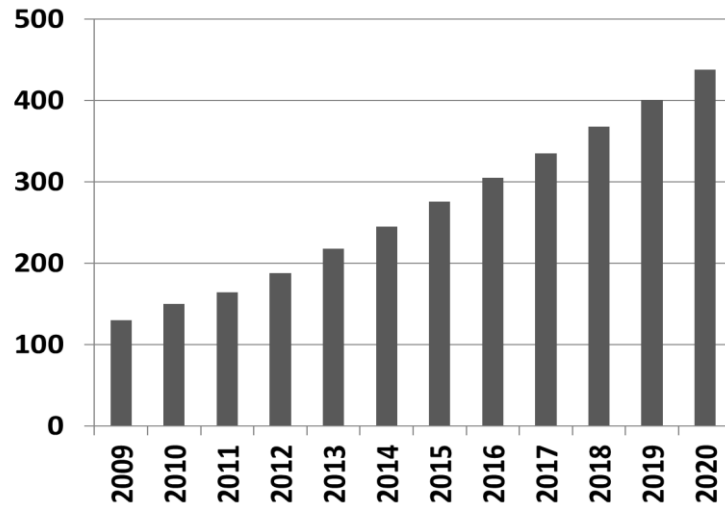
TTT (Todai To Texas) Program

Since 2014, more than **50 UTokyo teams** have been sent to SXSW (South by Southwest).

UTokyo Entrepreneur Dojo
Number of registrants by year



Total number of startups



Listed startups



Total

More than 470 startups
25 IPOs

UTokyo group companies for startup support



Innovation Platform for The University of Tokyo

UTokyo Investment Company / 2016

No.1 fund: 25 billion yen in total, invested in 57 companies so far, 2 IPOs

No.2 fund: Initial capital of 2.765 billion yen, increased to a full-fledged fund with a maximum of 25 billion yen



UTokyo venture capital / 2004

Managed 4 funds with a cumulative value of approximately 54.3 billion yen

Invested in about 110 companies, 13 companies including 12 IPO & M&A companies



UTokyo technology transfer / 1998

Cumulative license revenue of 10.47 billion yen

5,432 contracts signed in total

Hongo Intelligence Hill / Hongo Valley about 100 start-ups

FoundX:
UTokyo start-up support facilities



FoundX α / β / γ

UTokyo Entrepreneur Lab
UTokyo Entrepreneurial Plaza



Design Place α
Office for start-ups
More than 3,000 m², in use



With private organizations and local communities

HANAZONO ALLEY
Office for start-ups, 1,000 m², in use



New Place

The Seat Halki



Hongo K&K Bldg.
UTokyo-related facility, 150 m², in use



Kashiwaya Bl. II

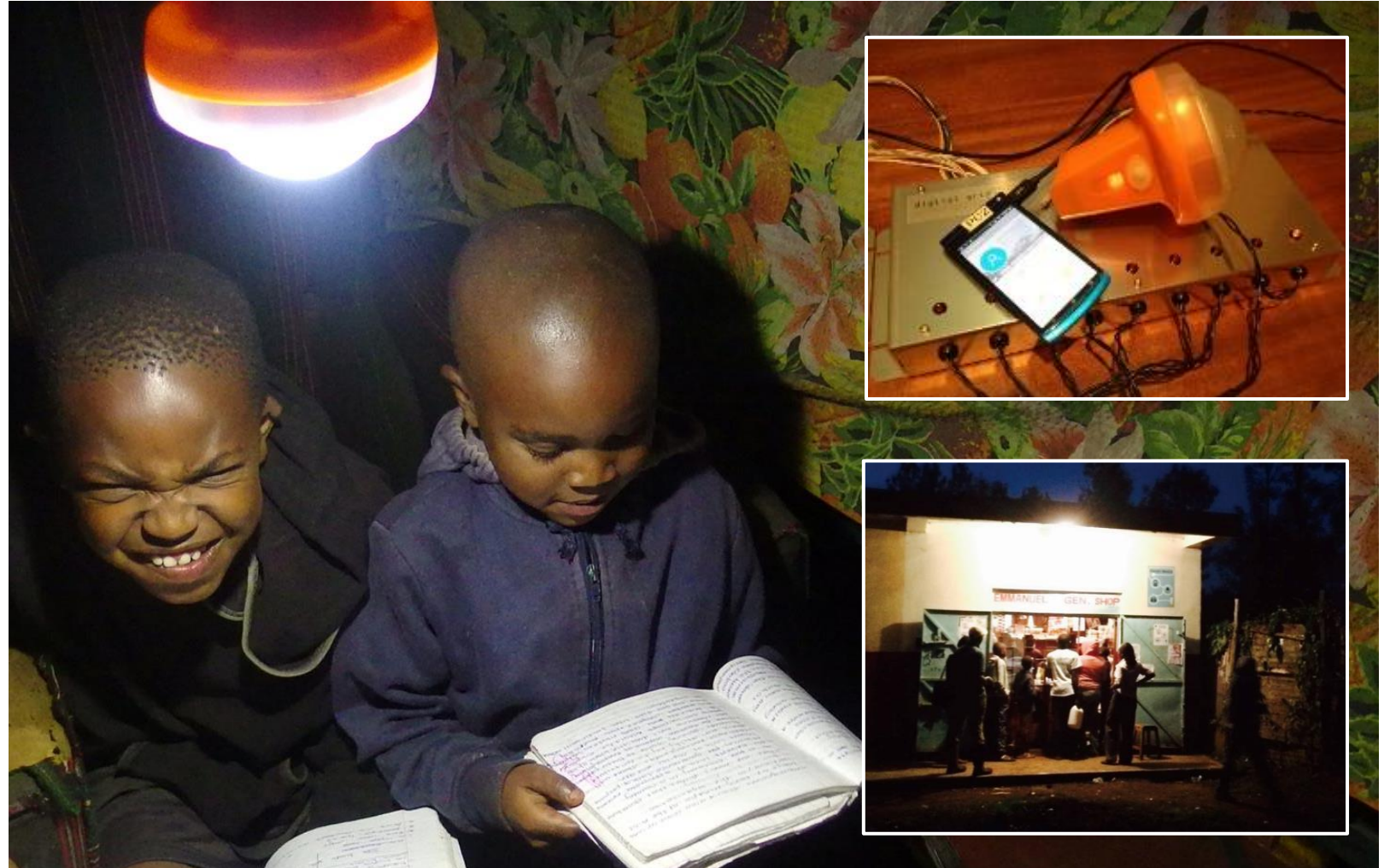
Kashiwaya Bl.

Google

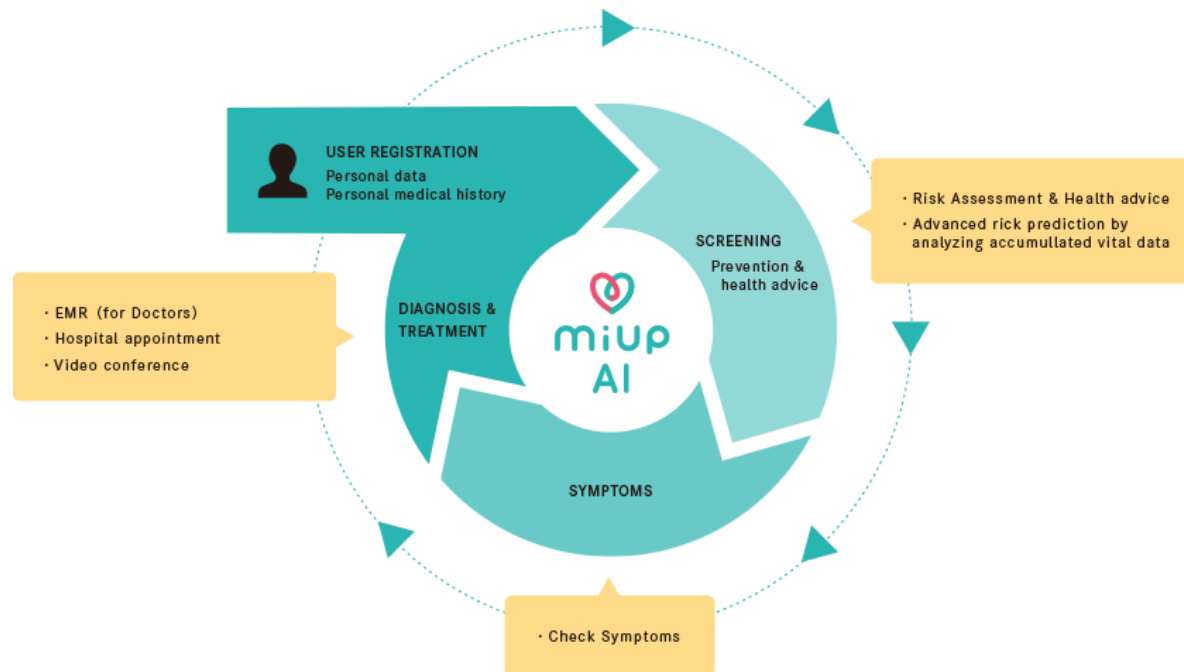
▼ UTokyo facilities ▼ Other facilities ▼ Startups ▼ VC / investors

Fostering UTokyo startups to launch global businesses

Solar Lantern in Tanzania by WASSHA



UTokyo AI-based medical start-up in Bangladesh



Mari Sako
Founder & Chairmen

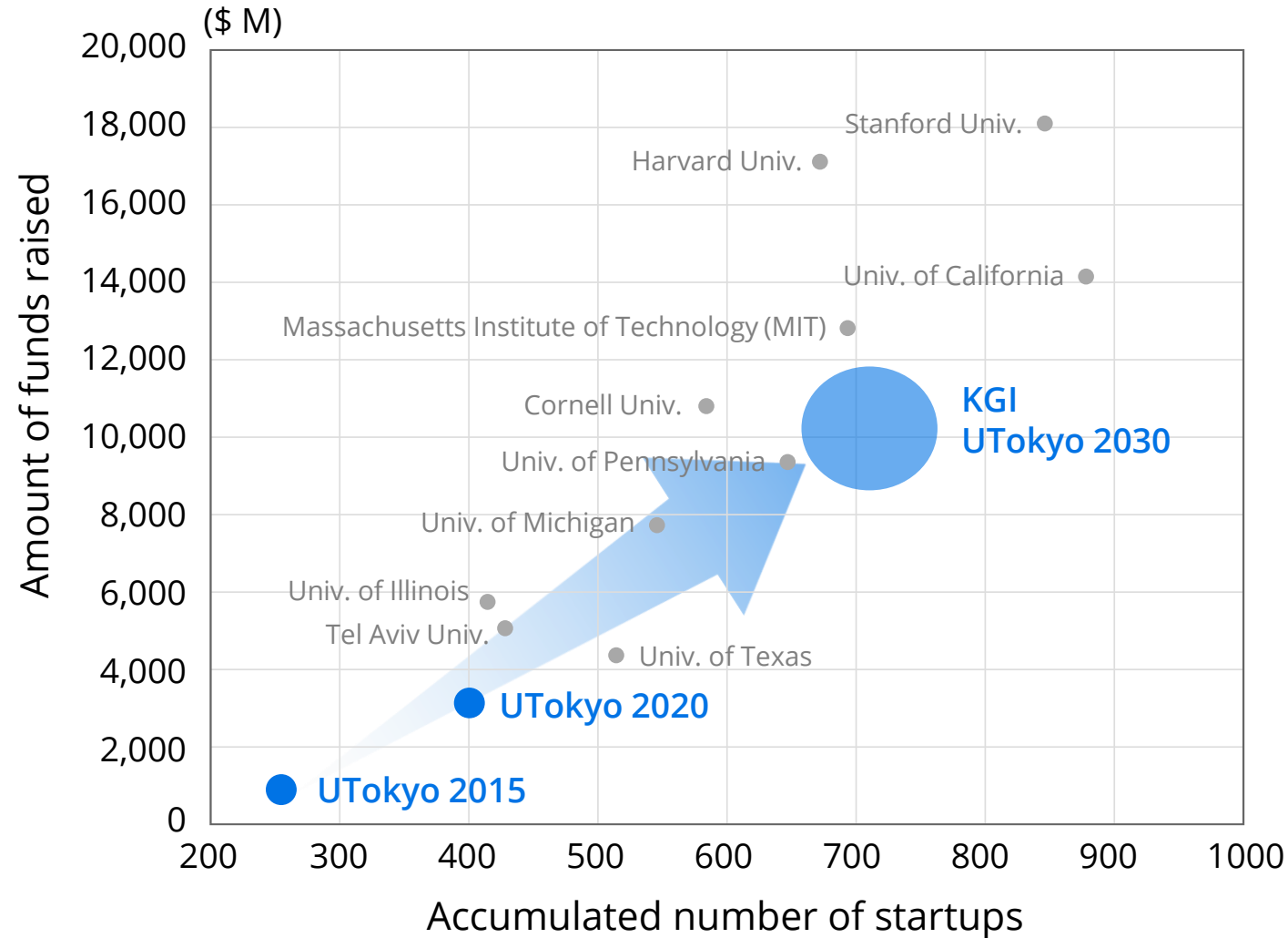
Studied poverty in developing countries at University, then became interested to work from a business angle rather than a study. Aspiring for a sustainable social impact.

Master of Agriculture, University of Tokyo.

Providing quality services to everyone by the **AI-powered healthcare**

- Health check-up services for the middle/upper class in cities
- Clinical examination center operation for medical institutions
- Remote AI-based healthcare in rural areas

Globalization is a key to scale up



The goal for UTokyo startups in 2030 ➡ \$ 10 Billion in capital & 700 companies



New York Innovation Seminar (2018)



UTokyo startups Globalization



JETRO SF



UTokyoNY

Student Mobility from/to Asia by Region 1999-2015

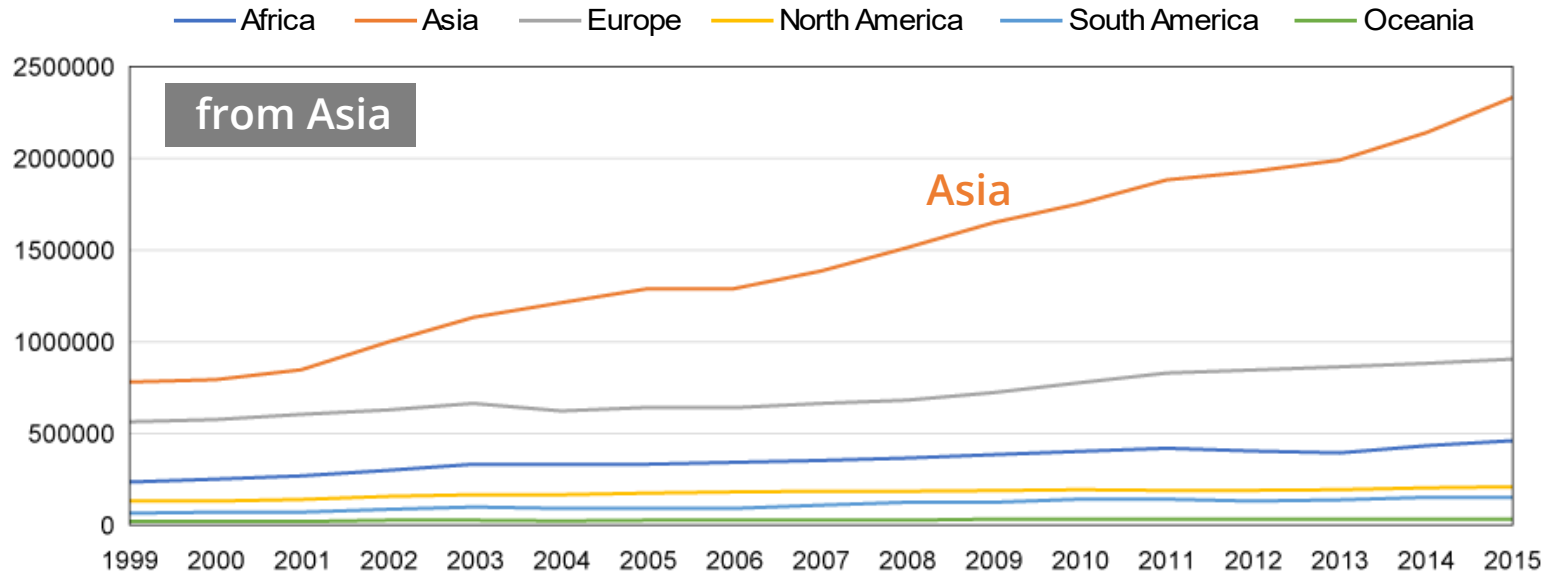


Figure 1
Outbound Mobility from Asia by Region,
1999-2015
Source: UNESCO Institute for Statistics

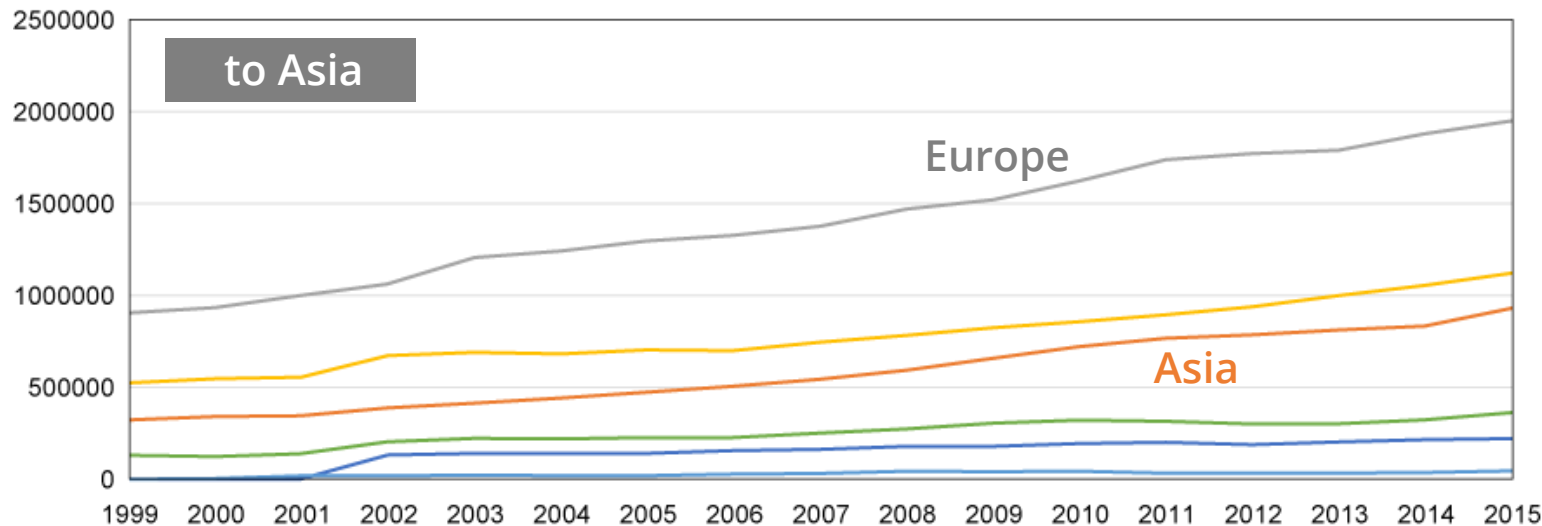


Figure 2
Inbound Mobility to Asia by Region,
1999-2015
Source: UNESCO Institute for Statistics

Tokyo Forum 2022

Shaping the Future

哲学と科学の対話

DIALOGUE BETWEEN
PHILOSOPHY AND SCIENCE

In-person & Online
ハイブリッド開催

DAY 1

Thursday, 1st December

12月1日(木)

18:00-21:35 JST / 9:00-12:35 GMT

DAY 2

Friday, 2nd December

12月2日(金)

17:00-21:45 JST / 8:00-12:45 GMT

Free Registration Required
参加無料(要事前登録)

In-person & Online

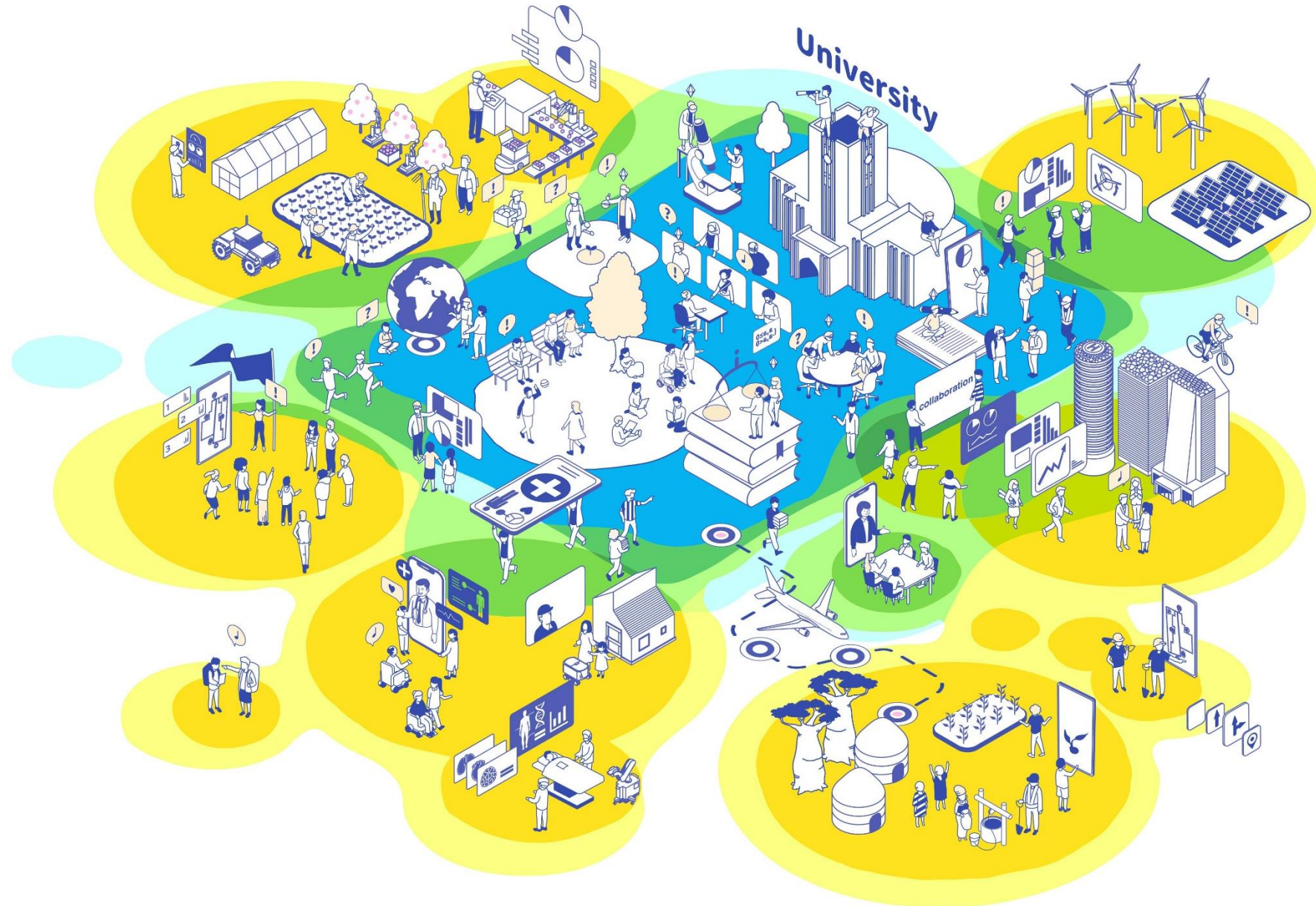
ハイブリッド開催

English 英語

Japanese simultaneous interpretation
available 日本語同時通訳あり



Create an ideal vision of the future through diverse dialogues with society



*Into a **Sea** of Diversity:*
Creating the Future through Dialogue